

FlashScan/AutoCal V2.06 Quick Reference

FlashScan

Scan Tool

Select PIDs

Entries from the *PID_SELECTION section in file Options.ini are listed here.

Data Logging

Record Data

Display Data

Display WO2

Scan Options

Save Trace File

Onboard modules

Lookup DTC

Pxxxx Codes

Cxxxx Codes

Bxxxx Codes

Uxxxx Codes

Tuning Tool

Tuning

Read Tune

Entries from the *TUNE_SELECTION section in file Options.ini are listed here.

Program Cal (not available yet)

Program Full (not available yet)

Injectors

Read GPM Inject

Prog ECM Inject

Read GPM Inject

Prog ECM Inject

Switchable Tunes

Entries from the *SW_DSP5 or *SW_E38 sections in file Options.ini are listed here.

Tune Options (not available yet)

Diagnostics

Display Info

Display VIN/OS

Display CVN

Trouble Codes

All DTCs (Press OK for selected DTC's description)

Current DTCs (Press OK for selected DTC's description)

Display FFs

Clear DTCs

Test Results

System Readiness

O2 Sensors

Mode \$06

Mode \$06 (All)

Record All Diags

Options

Setup

Edit Settings

File Sys: Set the target file system.

File #: Set the unique counter for file names.

Locale: Select US or Australian format dates.

Units: Select Metric or Custom display units.

MRU PIDs: Auto select most recently used PID selection.

ScanRate: Select BBL frame rate.

ADFilter: Select analog->digital filter passes.

A/D PIDs: Auto select analog->Digital PIDs.

Ser PIDs: Auto select serial wideband PIDs.

PIDs/LCD: Number of PIDs to display while BBL.

Note 30: Inset note 30 when user pauses data logging.

| | |
|-----------|-------------------------------------------------|
| Vfy BBR: | Extended BBR verification. |
| BBXStats: | Display statistics at end of BBR/BBF operation. |
| LED Mode: | Select the mode for LEDs on keypad. |
| COM Port: | Select type of data on serial port. |
| WO2 Type: | Select wide band controller type. |
| WO2 fmt: | Select wide band display format. |
| WO2 Data: | Select wide band display contents. |
| WO2-1 ID: | Select ID code of WO2 #1 |
| WO2-2 ID: | Select ID code of WO2 #2 |
| Lo Power: | Set low power timeout. |
| Splash: | Set splash screen timeout. |
| Alert: | Set alert message timeout. |
| Error: | Set error message timeout. |
| AR Delay: | Set keypad auto-repeat delay. |
| AR Speed: | Set keypad auto repeat speed. |
| Inverse: | Set display inverse. |

Set Date/Time

Change PIN

File System

Delete File

Free Space

Format File Sys

File Sys Info

Flash Stats

SD Card Status

SD Card Info

Browse Files

Licensing

License Details

VIN Licenses

Stream Licenses

Self Tests

Splash Screen

Low Power Mode

External Sensors

Display Sensors

Calibrate 5V A/D

Self Tests (press F4 to select hidden test menu)

AutoCal

Scan Tool

- Select PIDs

 - Entries from the *PID_SELECTION section in file Options.ini are listed here.

- Record Data

- Display Data

- Display VIN

- Display OS

- Save Trace

- Show Modules

Tuning Tool

- Read Tune

 - Entries from the *TUNE_SELECTION section in file Options.ini are listed here.

- Program Cal (not available yet)

- Program Full (not available yet)

- Read GPM Injector

- Prog GPM Injector

- Read ECM Injector

- Prog ECM Injector

- Switchable Tunes

 - Entries from the *SW_DSP5 or *SW_E38 sections in file Options.ini are listed here.

- Tune Options (not available yet)

Trouble Codes

- Display SRT Stat

- Display All DTCs

- Display Set DTCs

- Display FrzFrame

- Record Diags

- Clear Codes

AutoCal Options

- Edit Settings

 - File #: Set the unique counter for file names.

 - Locale: Select US or Australian format dates.

 - Units: Select Metric or Custom display units.

 - MRU PIDs: Auto select most recently used PID selection.

 - ScanRate: Select BBL frame rate.

 - Note 30: Inset note 30 when user pauses data logging.

 - Vfy BBR: Extended BBR verification.

 - BBXStats: Display statistics at end of BBR/BBF operation.

 - Lo Power: Set low power timeout.

 - Splash: Set splash screen timeout.

 - Alert: Set alert message timeout.

 - Error: Set error message timeout.

 - AR Delay: Set keypad auto-repeat delay.

 - AR Speed: Set keypad auto repeat speed.

- Restore Settings

- Set Date and Time

- Browse Files

- Delete File

- Free Space

- Format File Sys

Display Licenses

- SN: xxxxxxxxxxxxxx

- LIC: xxxxxxxxxxxxxx

- Firmware 2.05.xx

- BootBlk 2.05.xx

Low Pwr Mode

Self Tests

- Run All Tests

- Test LCD

- Test KEY

- Test ROM

- Test ROM FULL

- Test 12V

Test ALD
Test ALD RPT
Test VPW
Test VPW RPT
Test CAN
Test CAN RPT

Hotkeys

FlashScan Boot hotkeys: (keys held down during power-up)

| | |
|----|----------------------------------------------------|
| F1 | Reformat the CONFIG file system and reset settings |
| OK | Enter dead-poll mode |

AutoCal Boot hotkeys: (keys held down during power-up)

| | |
|------|----------------------------------------------------|
| Prev | Reformat the CONFIG file system and reset settings |
| OK | Enter dead-poll mode |

Menu hotkeys:

| | |
|-------------|------------------------------------------|
| F1 | Select menu option F1 |
| F2 | Select menu option F2 |
| F3 | Select menu option F3 |
| F4 | Select menu option F4 |
| Ok | Select current menu option |
| Up | Move to previous menu option |
| Down | Move to next menu option |
| Cancel | Return to previous menu |
| Ctrl+0 | Enter low power mode (any key to resume) |
| Ctrl+Down | Toggle Inverse LCD mode |
| Ctrl+Ok | Re-detect connected controllers |
| Ctrl+Bspace | Open the Settings Editor |
| Ctrl+Cancel | Reboot FlashScan |
| Ctrl+F1 | Select predefined PID set 1 |
| Ctrl+F2 | Select predefined PID set 2 |
| Ctrl+F3 | Select predefined PID set 3 |
| Ctrl+F4 | Select predefined PID set 4 |
| 0 | Start data logging |

Selection hotkeys:

| | |
|--------|----------------------------------------------|
| Up | Move to previous setting |
| Down | Move to next setting |
| Left | Move to previous page |
| Right | Move to next page |
| Cancel | Exit |
| OK | Select currently highlighted option and exit |

Data Logging Hotkeys:

| | |
|---------------------------------------------------------------------------|--------------------------------------------------------------------------------|
| Up | Scroll data display up |
| Down | Scroll data display down |
| Left | Scroll data display up a page |
| Right | Scroll data display down a page |
| Ok | Pause data logging (data continues to update on screen) |
| Cancel | Stop logging and save data. (MUST be done BEFORE power is removed from device) |
| Enter | Toggle Display of Metric and Custom units |
| Ctrl+Enter | Toggle large/small font for display of PID values |
| Ctrl+Down | Toggle Inverse LCD mode |
| F1 | Tag logged data with Note 1 |
| F2 | Tag logged data with Note 2 |
| F3 | Tag logged data with Note 3 |
| F4 | Tag logged data with Note 4 |
| Ctrl+F1 | Tag logged data with Note 5 |
| Ctrl+F2 | Tag logged data with Note 6 |
| Ctrl+F3 | Tag logged data with Note 7 |
| Ctrl+F4 | Tag logged data with Note 8 |
| (A short beep is sounded to indicate tag has been inserted into log file) | |

Wide Band O2 display hotkeys:

| | |
|-----------|--------------------------------------------------------------------------------|
| Enter | Toggle Lambda and EQ Ratio display |
| OK | Cycle sensor 1, sensor 2 and both sensor display modes (Innovate and PLX only) |
| 0 | Perform a free-air calibration (LC-1 only) |
| Backspace | Cycle through wide band controller types |

Settings Editor hotkeys:

| | |
|-----------|-----------------------|
| Left | Reduce setting by 1 |
| Right | Increase setting by 1 |
| Ctrl+Left | Reduce setting by 10 |

| | |
|----------------|---------------------------------------------------|
| Ctrl+Right | Increase setting by 10 |
| Up | Move to previous setting |
| Down | Move to next setting |
| Ctrl+Up | Select minimum setting |
| Ctrl+Down | Select maximum setting (also toggles LCD inverse) |
| Ctrl+Backspace | Restore factory defaults |
| Cancel | Discard changes and exit |
| OK | Save changes and exit |

Splash Screen Hotkey:

Press any key to clear splash screen before timeout

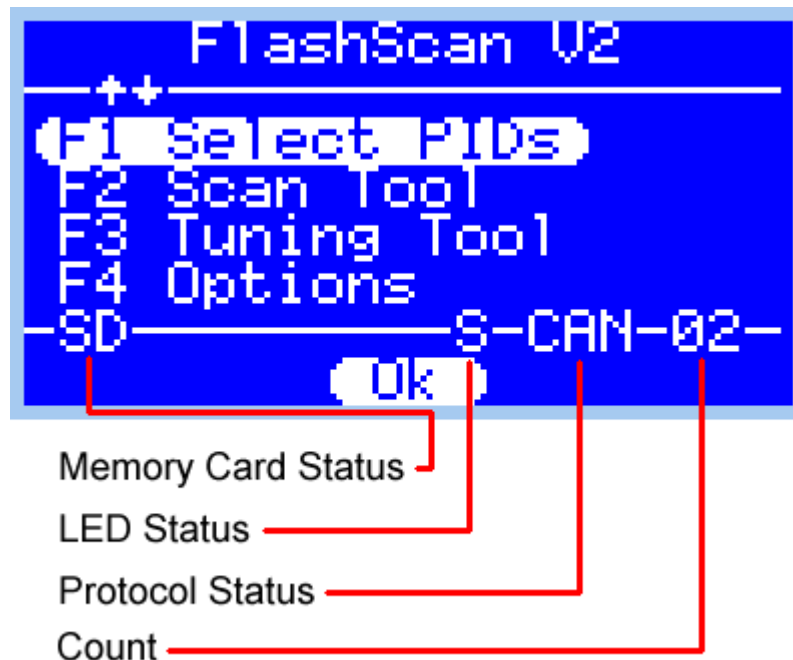
Set Time Hotkeys:

| | |
|--------|--------------------------|
| Up | Decrease selected value |
| Down | Increase selected value |
| Ok | Move to next value |
| Cancel | Discard changes and exit |

Display Options

FlashScan

The second to last line of the FlashScan menu screen contains information about the current operating state.



Memory card status

- SD:** SD card is selected and present
- XX:** SD card is selected but not present
- IM:** Internal memory is selected (SD card is ignored if present)

LED status

- S** LEDs are used to show various systems' status, numbered from left to right:
 - 1 BB Logging is in progress (flashes when BB logging is paused)
 - 2 Data is being streamed to the RS232 connection
 - 3 Data is being written to flash memory (do not power down)
 - 4 OBD data is being received from or transmitted to the vehicle
 - 5 USB data is being received from or transmitted to the PC/laptop
- A** LEDs are ONLY used to display visual alarms defined in Options.ini
- X** LEDs are switched off

Protocol status

- ALD** ALDL protocol detected (not available yet)
- CAN** Controller Area Network protocol detected
- VPW** Variable Pulse Width protocol detected

Count

Number of on-board controllers detected.